

**Normanton S Bends -
CURRENT**

**Frequent
accidents on this
bend.**

1. Cars leave
road and stop in
ditch and hedge



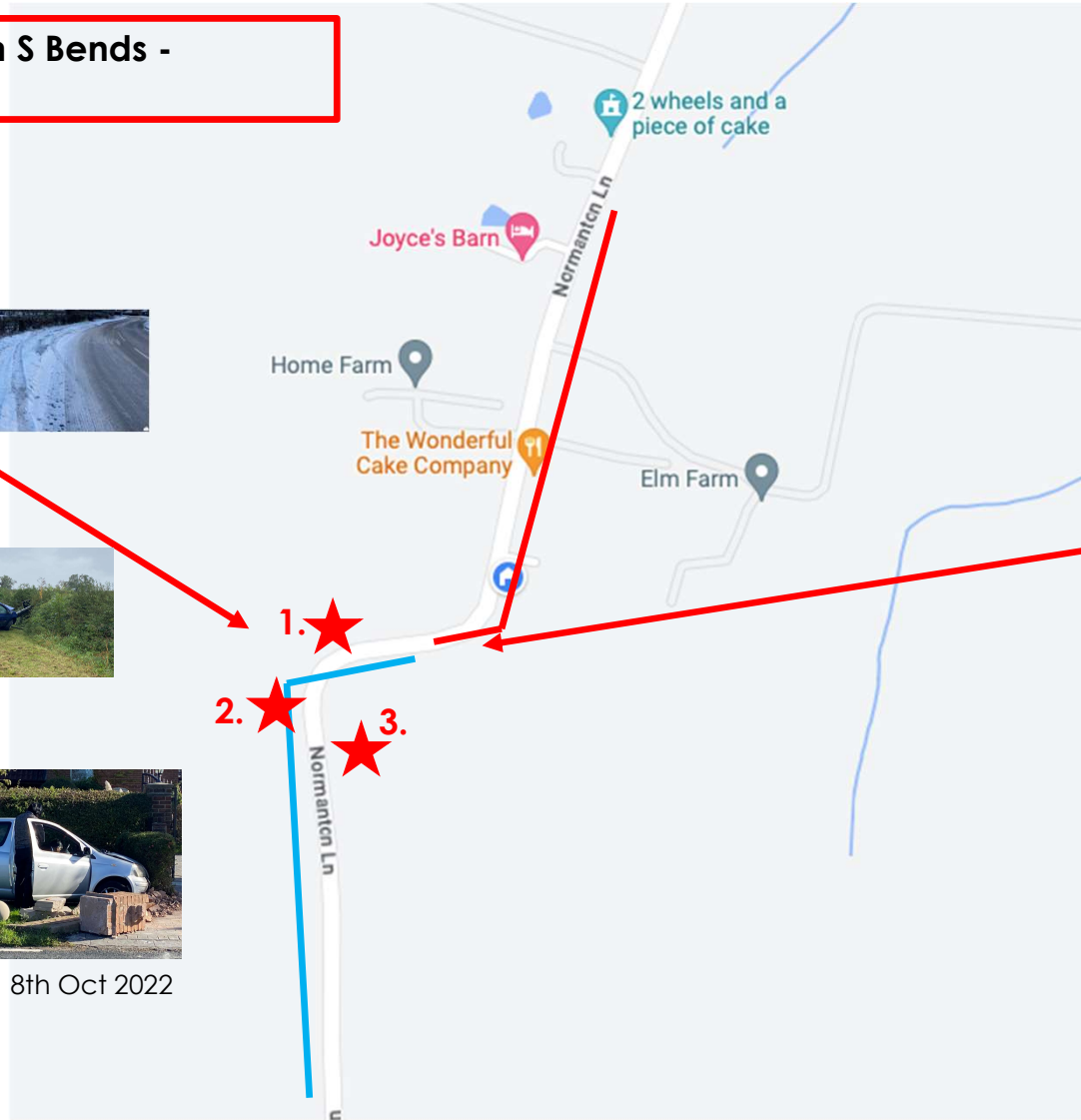
2. Cars leave
road and hit
flower planter
and LCC signage



3. Cars leave
road and hit
front gate posts
at Hawthorn
Pastures

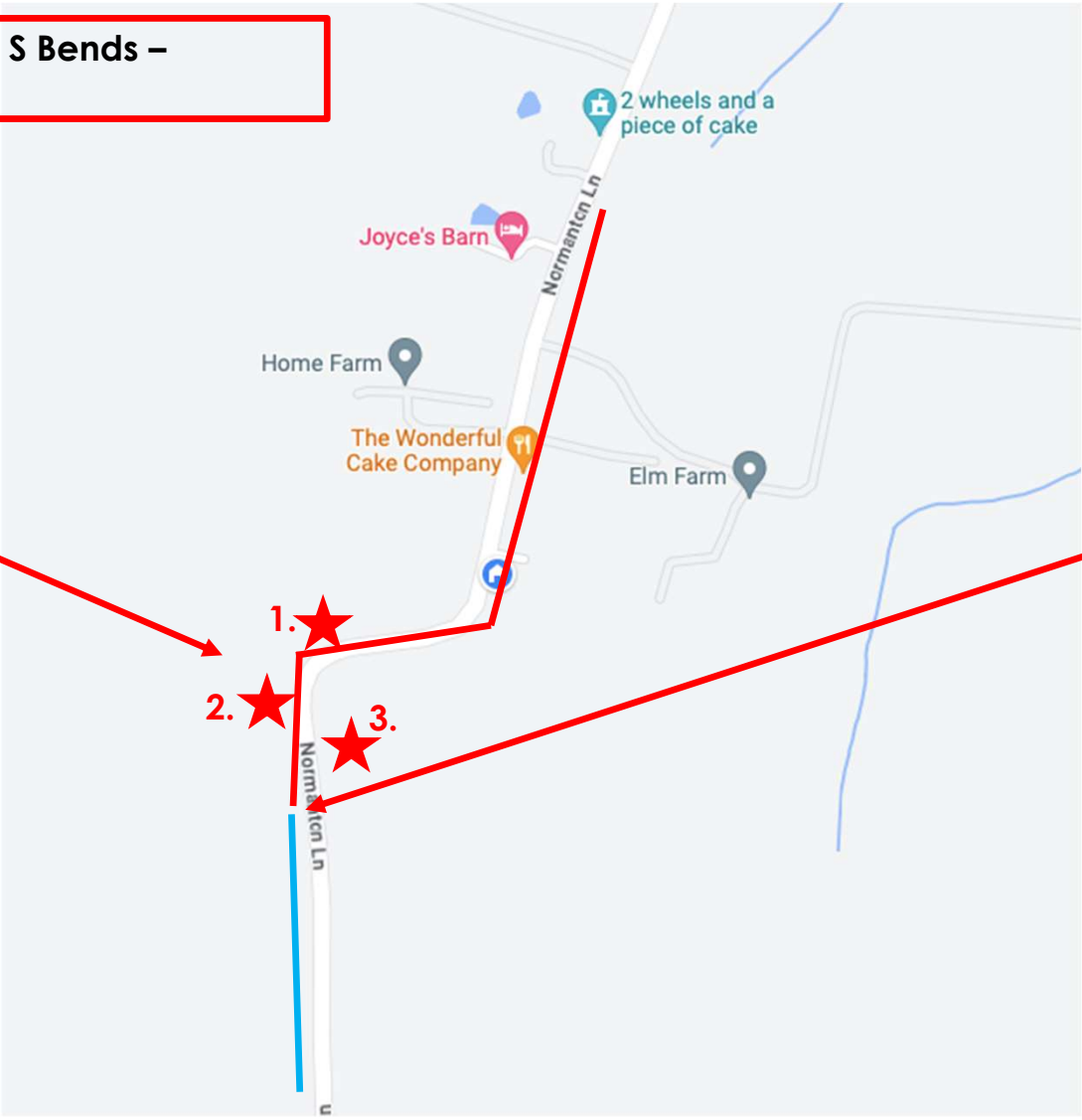


8th Oct 2022



Existing 30mph
limit through
Normanton stops
here before the
accident prone
bend

**Normanton S Bends –
PROPOSED**



**Frequent
accidents on this
bend.**

1. Cars leave road and stop in ditch and hedge
2. Cars leave road and hit flower planter and LCC signage
3. Cars leave road and hit front gate posts at Hawthorn Pastures

Proposed extension of 30mph limit to include accident prone bend